



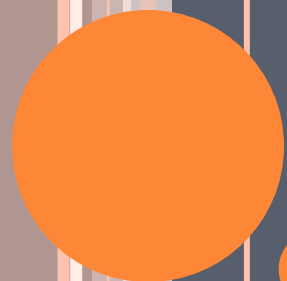
INSTITUTE COMPUTER ORIENTATION

Understanding the lifeline of insti...

Outline

- Address from Head CC
- People
- IITB Network
- Services & Facilities @ Insti
- TroubleShooting
- Linux & Open Source Softwares
- Windows





PEOPLE

People

○ Computer Center?

○ Hands of CC

- MLC
- Department Sysads
- Hostel Sysads

○ CC Staff

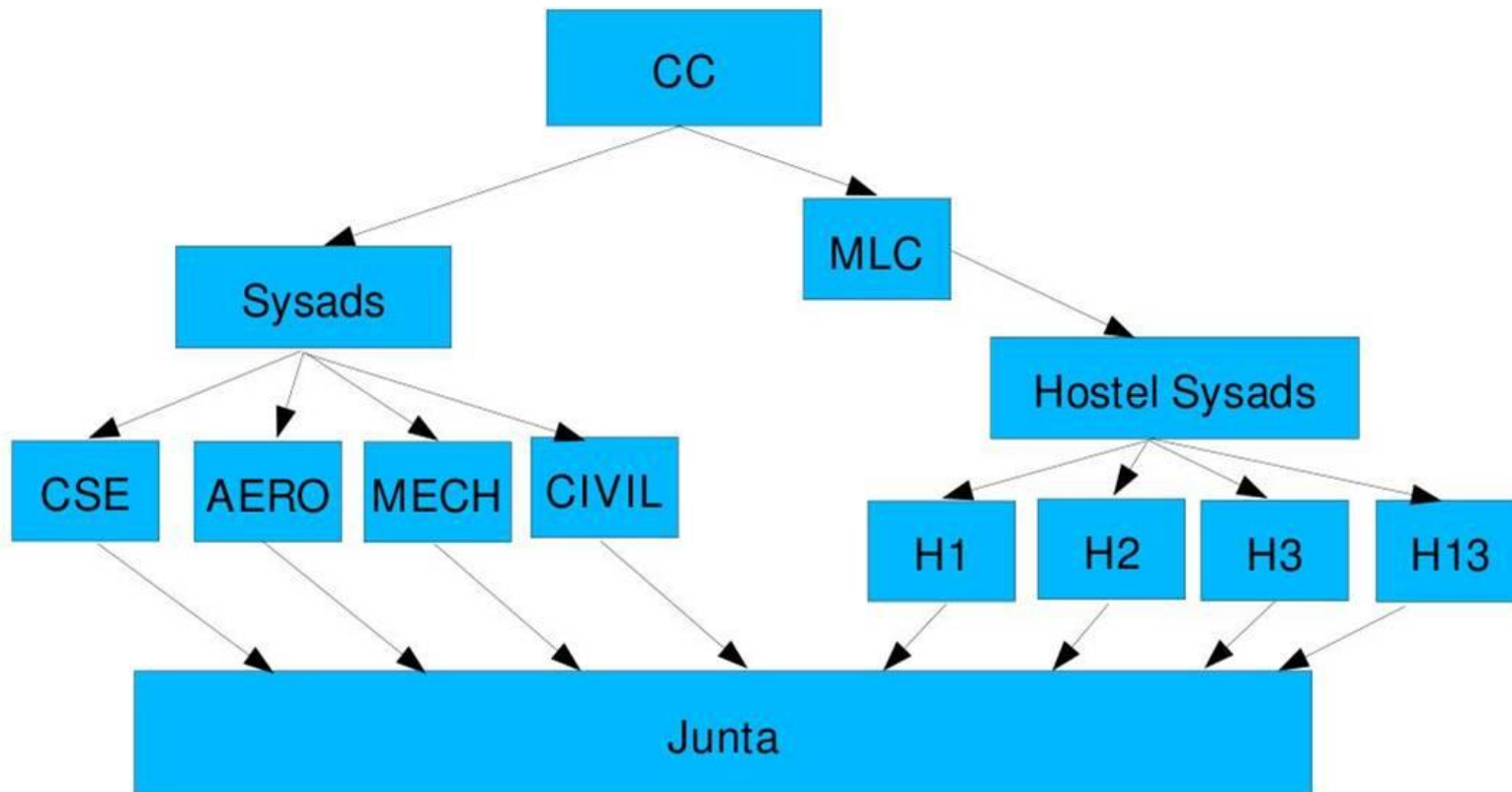
- Web, System, Networks...

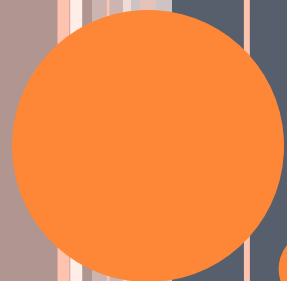
○ Vendors

Maxmann	H4, H5, H7
Benchmark	H1, H2, H3, H11
Unicomp	H9, H12, H13
Best IT World	H6, H8, H10



Administrative Structure





IITB NETWORK

Basic Info

○ What is a network?

- Set of interconnected computers

○ IITB Network (will undergo major Revamping)

- Internet Speed: 32 Mbps → 104 Mbps
- Connectivity at Rooms: 100Mbps → 1 Gbps
- 1 Gbps Optical Network Backbone → 10 Gbps



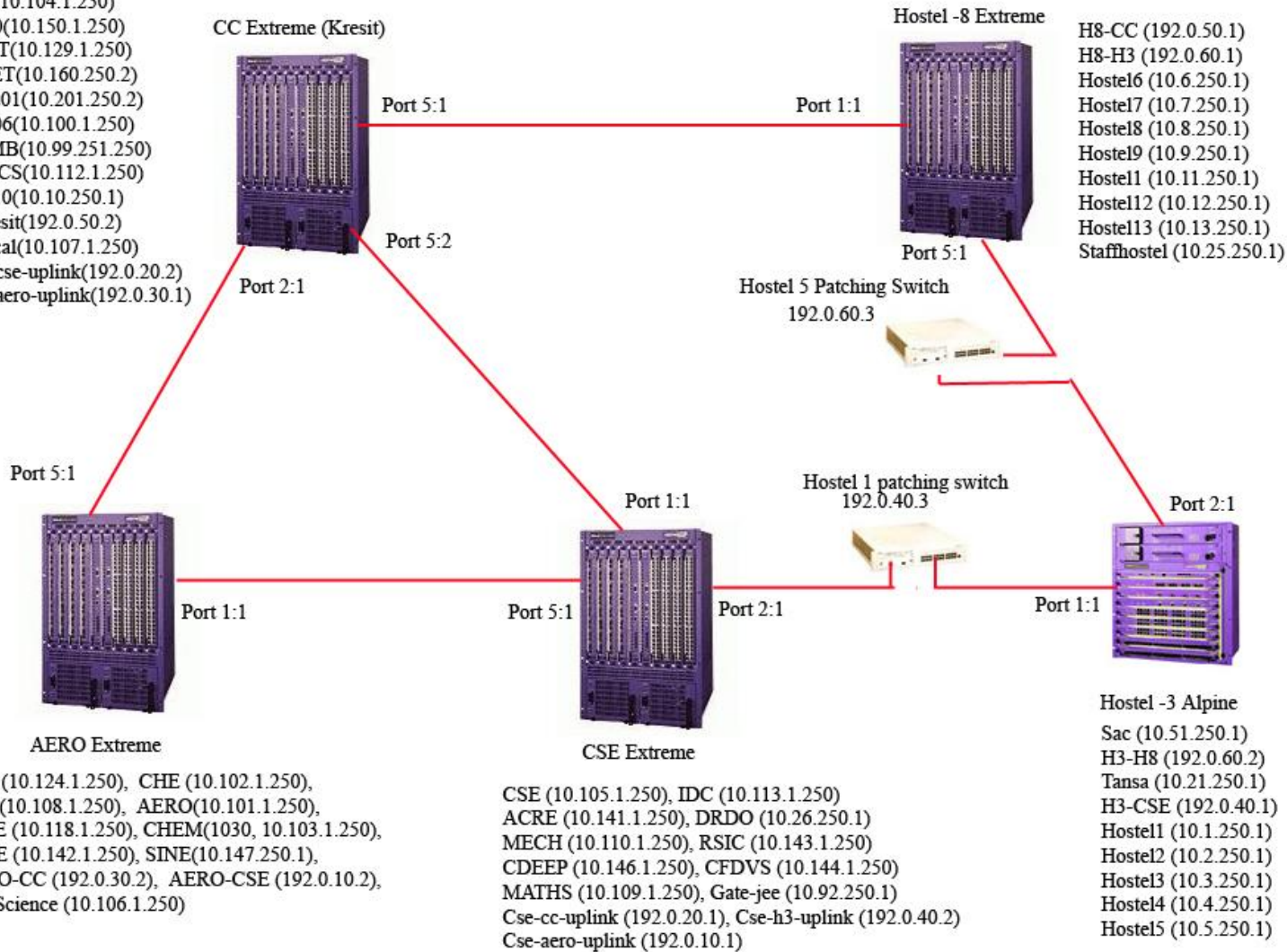
What kind of a Network does IITB have?

- Provides both Wired and Wireless connectivity.
- IITB's network is segregated into the following
 - Academic Section
 - Hostels
 - Residential Area
- Provides network to all Departments, Hostels, Administrative Sections, and the Residential Area.
- Gigabit connectivity to each department and hostel.



IIT Bombay Core Network

SOM(10.127.1.250)
 CADC(10.145.250.1)
 META(10.111.1.250)
 CIVIL(10.104.1.250)
 CC-150(10.150.1.250)
 KRESIT(10.129.1.250)
 RESNET(10.160.250.2)
 DMZ-201(10.201.250.2)
 CC-1106(10.100.1.250)
 LAN-MB(10.99.251.250)
 PHYSICS(10.112.1.250)
 Hostel10(10.10.250.1)
 H8-Kresit(192.0.50.2)
 Electrical(10.107.1.250)
 Kresit-cse-uplink(192.0.20.2)
 Kresit-aero-uplink(192.0.30.1)



Network Terms & Settings

○ IP (Internet Protocol)

- Identification of a computer in a network.
- IIT Bombay IP allocation scheme:
 - General Pattern: 10.xx.yy.zz
 - xx : Hostel Number
 - yy & zz will indicate your Room Number
 - zz is last 2 digits of your Room Number
 - yy is remaining part of Room Number

Hostel 8, Room No. 54 : IP Address 10.8.0.54

Hostel 4, Room No. 270 : IP Address 10.4.2.70

- Detailed Info:

<http://web.iitb.ac.in/web/ip-allocation.php>



Network Terms & Settings

○ Subnet Mask

- 255.255.0.0

○ Gateways

- At Individual Hostel level:
- General pattern: 10.xx.250.1

where xx: Hostel Number

○ DNS (Domain Name Server)

- Server that gives IP corresponding to a URL
- 10.200.1.11



IITB Proxy Server (NETMON)

- Required to access anything outside the IIT campus, i.e. Internet.
- Internet browser connection settings:
 - Automatic: <http://www.cc.iitb.ac.in/autoproxy.pac>
 - Manual: Server: netmon.iitb.ac.in
 - Manual: Port: 80





SERVICES & FACILITIES @ INSTI

LDAP

- LDAP – Light Weight Directory Access Protocol
- It is like a Institute Electronic Identity.
- Every student/staff gets an institute LDAP account on joining (e.g.. 09D05004).
- User-id can be changed only once after 1st September.
- Please avoid selecting fancy uids like chunky007, buntythegreat ...
- Used in authentication on all services provided by the Institute.



Central Accounts Management Portal (CAMP)

- CAMP – <http://camp.iitb.ac.in/>
- Used to modify, Password, UserID and Personal Details, of the LDAP account.
- Mail forwarding.
- Other LDAP account maintenance operations.



Institute Webmail (GPO)

- <http://gpo.iitb.ac.in>
- Login: using institute LDAP id
(e.g. 09D05004)
- Email address: yourldapid@iitb.ac.in
(09D05004@iitb.ac.in)
- Inbox size : 1 GB
- Other Interfaces:
 - <http://imp.iitb.ac.in>
 - <http://iloha.iitb.ac.in/>
 - <http://hasty.iitb.ac.in>



Institute Webmail (GPO)

- This service can also be accessed via Kmail, Pine, Thunderbird, Outlook Express etc. using:
 - IMAP Service.
 - <http://docs.iitb.ac.in/webmail/tutorial/imapfaq.html>
- Mailing Lists – Used to send email to a particular group of users
 - <http://lists.iitb.ac.in>
 - Seminar, Programmers, Clubs, Matlab-users, etc.
- **Do NOT reply to any phishing mails**
Computer Center NEVER asks for your password



Storage Facility (BIGHOME)

○ URL: bighome.iitb.ac.in

○ Storage Server

- Can store your data and access from anywhere within the institute
- Quota :- 500MB
- Access:
 - FTP Clients
 - Mounting

○ For Instructions and Information:

<http://www.cc.iitb.ac.in/faq/storagefaq.php>



Personal Web Page

- Do the ftp login to 'bighome.iitb.ac.in' by using any ftp client
 - For Unix: gftp ; For Windows: any GUI FTP Tool
- Create 'public_html' folder in your homedir .
- Copy all web pages in public_html
- Change the permissions of both home directory and public_html directory to '755'. 'chmod 755'
 - Through ftp clients you can change the file permissions/attributes
- <http://homepages.iitb.ac.in/~userid> will be URL for your homepage.



IITB FTP Repository

- URL: <ftp://ftp.iitb.ac.in>
- Stores common open-source softwares.
- To save your time and network bandwidth
- Linux/FreeBSD distributions
 - Fedora, Mandrake Linux, Debian, Redhat, Mandriva, Knoppix , etc.
- Various other softwares
 - Oracle, Scilab, Java, SSH clients, MPlayer etc.
- Licensed Softwares :
 - Matlab, Mathematica, Techplot, ANSYS



MSDNAA

- IITB – Microsoft Developer Network Academic Alliance
- Allows access to Licensed Microsoft Software to students.
- Free software and Operating Systems available for download: Windows XP, Windows Server 2003, Windows Vista, Visual Basic, Visual C++, .NET, SQL server, etc.
- Visit for details:
<http://msstore.iitb.ac.in/msdnaa/>
<ftp://msstore.iitb.ac.in/>
Email: request.ms@iitb.ac.in



Wireless Networks & Newsgroups

- WiFi Networks available for use at major academic locations like MB, LT, SOM, Library etc.
- Proxy authentication required using LDAP
- For help in Configuration visit:
<http://www.cc.iitb.ac.in/wireless/index.php>
- Newsgroups:
 - <http://varta.iitb.ac.in/>
 - Use LDAP id and password to login



Other Useful Academic Services

- Application Software Cell (ASC)
 - URL: <http://asc.iitb.ac.in/>
 - Academic Information and Management
- Moodle
 - URL: <http://moodle.iitb.ac.in/>
 - Academic Discussion Forum
- Online Fees Payment
 - <http://www.iitb.ac.in/onlinepay/>



Useful User IDs

○ Institute General Secretaries

GS Hostels : gsecha@iitb.ac.in

GS Sports : gsecsports@iitb.ac.in

GS Cultural : gseccult@iitb.ac.in

GS Acad UG : gsecaaug@iitb.ac.in

GS Acad PG : gsecaapg@iitb.ac.in

○ Hostel Gsecs : gsech**@iitb.ac.in

** will the 2 digit hostel number.

○ Hostel System Administrators : sysadh**@iitb.ac.in

** will the 2 digit hostel number.



IT Usage and Fine Policy

- <http://www.cc.iitb.ac.in/cgi-bin/policy.cgi>
- Internet access is provided STRICTLY for academic use.
- Please avoid unethical browsing, downloads from the internet.
- Fine will be imposed in the following cases:
 - Excessive Downloads
 - Bombarding :- Internal (within campus network), External
 - Email Spamming.
 - Damage to CC Equipment by Hostel Inmates (Racks, Locks, Switches, etc)



IT Usage and Fine Policy

○ Malicious Activities

- Packet Sniffing
- Hacking
- Password Snooping (Stealing)

○ <http://gymkhana.iitb.ac.in/~mlc/fine-policies.html>



Lan Ban

- In hostel rooms during 12am to 7am
- No Lan Ban during vacations!

Computer Rooms in Hostels

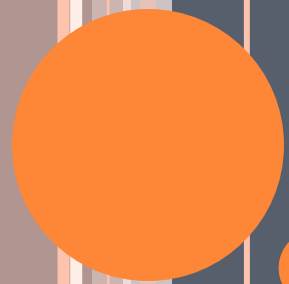
- 24x7 internet access
- Follow Comp Room Rules strictly
- Contact your sysad/comp secy in case of any problems



Vendor Facility

- CC has a contract with vendor for supply and maintenance of student's and institute's hardware and software
- According to rate contract available at CC site, new hardware can be bought.





TROUBLESHOOTING



Things to be done in case of a Network Problem

- **Steps for checking physical connectivity:**
 - Check if LEDs are glowing in the place where network cable is plugged into your PC.
 - If they are not, check if the cable is plugged properly. Remove and replug it at both ends. One end is in your computer and other is in the wall jack.
 - If LED's are glowing, go to next step. If they are still not glowing, please register complaint with your hostel comp secy / sysad.



Things to be done in case of a Network Problem

- **If physical connectivity seems fine then go to the next section:**
 - Check if your IP address, subnet mask, gateway and DNS entries are correct
 - Type the following command in command prompt/terminal for finding your IP on the machine:
 - On windows: "ipconfig". This command shows the machines IP address, subnet mask and gateway.
 - On Linux: Type `"/sbin/ifconfig"`



Things to be done in case of a Network Problem

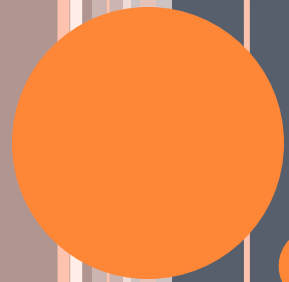
- Try to ping few machines in your building using the command prompt/ terminal. The command is: "ping x.x.x.x" where x.x.x.x is the IP address.
- If that succeeds, try to ping the Main switch of your hostel . The IP address of the switch will be 10.<hostel no>.250.1
- If all is done but still you are unable to connect to the network, please contact your hostel SysAd or Comp Secy



Whom to Contact?

- For networking issues:
 - Hostel or Department Sysads
- For other issues:
 - <http://help.cc.iitb.ac.in/>
 - For urgent queries you can come to CC HelpDesk
(SIC 101, KRESIT 4:30 pm - 5:30 pm Except Thu)





LINUX & OPEN SOURCE

LINUX

- Operating System just like Windows
- Robust, Stable, Open Source, Safe and Secure.
- No viruses – well almost true
- IIT Bombay encourages you to use Linux
(Almost all labs use Linux Systems)
- Must attend [Prabhat](#) – A workshop on Linux



Distributions (DISTROS)

○ Ubuntu

- A Debian based distro. Currently quite popular in Linux world especially among newbie.

○ Fedora

- A product of Redhat.

○ SuSE

- Easy to use distro ideal for personal computers.

○ Mandrake

- Another distro for Linux newbie.

○ Gentoo and Debian

- For advanced users

○ Knoppix

- Run from a CD
- No need to install
- Best if you want to try



Open Source

- Why use proprietary software when better alternative is available freely.
- More Power
 - The code is open and you can see it, use it, change it, learn from it and contribute to it **WITHOUT ANY COST**
 - Evolved by efforts of thousands of developers worldwide, so caters to everyone's problem
- Linux and Other Open Source Software are owned by no one and freely available.



Open Source Software

- Mozilla Firefox – The dominant browser in insti. Much more friendly and powerful than IE and other browsers
- Mozilla Thunderbird – Email client
- Mplayer – Plays (almost) all the movie/audio files
- VLC – Another media player, better with streaming
- Gaim (now Pidgin) – Yahoo, Gtalk, MSN.. All messengers in one
- Amarok – Equivalent of iTunes, Window Media Player



Open Source Software

- Open office – Open Source community's answer to MS office
- More techie: Apache, Java, GIMP, MySQL, PHP, vi, emacs, python, Notepad++, wamp, vnc, wireshark, dia, wordweb
- Most of them available for Windows as well
- Many add-ons available for these, e.g. for Firefox



Firefox



Thunderbird

The screenshot displays the Mozilla Thunderbird email client interface. The window title is "Inbox for dhananjays@iitb.ac.in - Mozilla Thunderbird". The menu bar includes File, Edit, View, Go, Message, Tools, and Help. The toolbar contains icons for Get Mail, Write, Address Book, Reply, Reply All, Forward, Delete, Junk, Print, and Stop. The left sidebar shows the folder hierarchy: GPO (Inbox (3), Drafts, Sent, Trash, bhopal friends, cs213, cs296, Forwards, Hostel-Sysads, Important Stuff!!, IP activation requests, secygirl) and Local Folders. The main pane shows a list of emails with columns for Subject, Sender, and Date. The selected email is "Welcome to the 'Programmers-club' mailing list" from "programmers-club-request@iitb.ac.in" dated 08/04/2007 06:12 PM. The email body contains a welcome message and instructions for the mailing list.

Subject: Welcome to the "Programmers-club" mailing list
From: programmers-club-request@iitb.ac.in
Date: 08/04/2007 06:12 PM
To: dhananjays@iitb.ac.in

Welcome to the [Programmers-club@iitb.ac.in](mailto:programmers-club@iitb.ac.in) mailing list!

To post to this list, send your email to:
programmers-club@iitb.ac.in

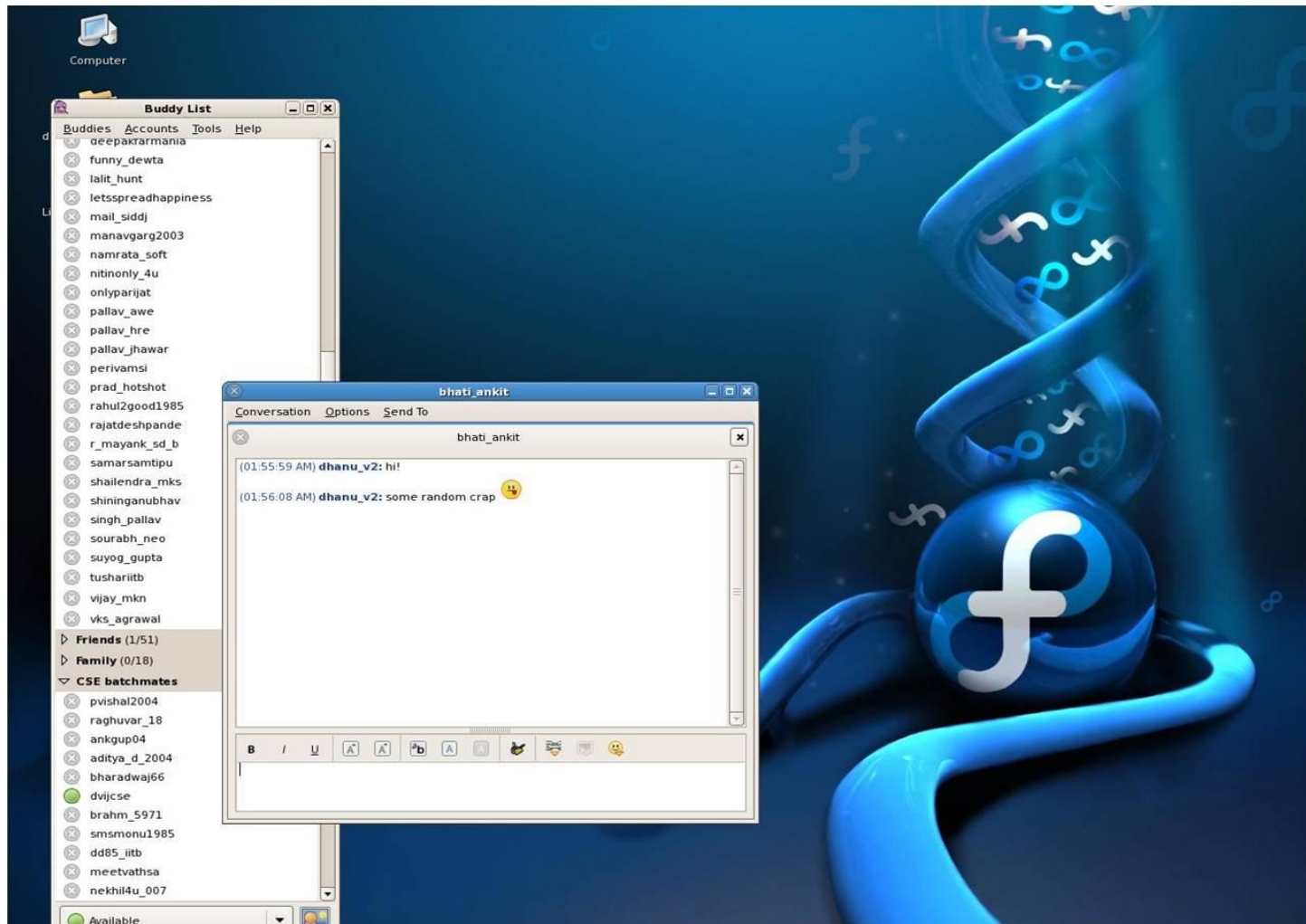
General information about the mailing list is at:
<http://lists.iitb.ac.in/mailman/listinfo/programmers-club>

If you ever want to unsubscribe or change your options (eg, switch to or from digest mode, change your password, etc.), visit your subscription page at:
<http://lists.iitb.ac.in/mailman/options/programmers-club/dhananjays%40iitb.ac.in>

You can also make such adjustments via email by sending a message to:
Programmers-club-request@iitb.ac.in

The taskbar at the bottom shows the system clock as Tue Aug 7 1:54 AM and several open applications including Firefox, Thunderbird, and a terminal window.

Gaim (Now Pidgin)



Amarok

The screenshot displays the Amarok music player interface. The main window is titled 'amarok'. The top menu bar includes 'Actions', 'Playlist', 'Tools', 'Settings', and 'Help'. Below the menu bar, there are tabs for 'Home', 'Current Track', and 'Lyrics'. The left sidebar contains a 'Context' menu and a list of album covers. The main area shows the 'Amarok' album by Mike Oldfield, with a track list and a progress bar. The track list includes 'Get Your Snack On', 'Four Ton Mantis', 'Slowly', 'Marine Machines', 'Golfer vrs Boxer', 'Deo', 'Precursor (featuring Quadraceptor)', 'Saboteur', 'Chocolate Lovely', 'Rhino Jockey', 'Keepin' It Steel (The Anvil Track)', 'Natureland', 'Melissa Juice', '05-triangles_and_rhombuses', 'saturday's child', 'medusa', 'La Negra Tomasa', '02_Afterlife - Dub In Ya Mind.mp3', 'The Girl Who Was...Death', 'Last Ninja - The Palace', 'Amarok', 'The Wind Chimes Part One And Part Two', 'Islands', 'Flying Start', 'North Point', 'Magic Touch', 'The Time Has Come', and 'When The Nights On Fire'. The progress bar at the bottom shows the current track 'Amarok' is playing at 0:14:40 out of 60:02.

Actions Playlist Tools Settings Help

Home Current Track Lyrics

Filter here...

Title	Artist	Album	Length
Get Your Snack On	Amon Tobin	Supermodified	4:22
Four Ton Mantis	Amon Tobin	Supermodified	4:45
Slowly	Amon Tobin	Supermodified	5:37
Marine Machines	Amon Tobin	Supermodified	5:45
Golfer vrs Boxer	Amon Tobin	Supermodified	6:17
Deo	Amon Tobin	Supermodified	6:44
Precursor (featuring Quadraceptor)	Amon Tobin	Supermodified	4:39
Saboteur	Amon Tobin	Supermodified	5:18
Chocolate Lovely	Amon Tobin	Supermodified	6:03
Rhino Jockey	Amon Tobin	Supermodified	7:28
Keepin' It Steel (The Anvil Track)	Amon Tobin	Supermodified	4:29
Natureland	Amon Tobin	Supermodified	5:48
Melissa Juice	Boards of Canada	Twoism	1:32
05-triangles_and_rhombuses	Boards of Canada	Music Has the Right to Chi...	1:50
saturday's child	Brendan Perry	Eye of the Hunter	4:31
medusa	Brendan Perry	Eye of the Hunter	6:10
La Negra Tomasa	Compay Segundo	Las flores de la vida	3:57
02_Afterlife - Dub In Ya Mind.mp3	Compilation	Cafe Del Mar Volumen Seis	5:14
The Girl Who Was...Death	Devil Doll	The Girl Who Was...Death	66:06
Last Ninja - The Palace	Instant Remedy	Instant Remedy	4:58
Amarok	Mike Oldfield	Amarok	60:02
The Wind Chimes Part One And Part Two	Mike Oldfield	Islands	21:49
Islands	Mike Oldfield	Islands	4:20
Flying Start	Mike Oldfield	Islands	3:37
North Point	Mike Oldfield	Islands	3:33
Magic Touch	Mike Oldfield	Islands	4:14
The Time Has Come	Mike Oldfield	Islands	3:55
When The Nights On Fire	Mike Oldfield	Islands	6:40

Track played once
25
Last played: 6 minutes ago
First played: 6 minutes ago

Favorite Tracks By Mike Oldfield

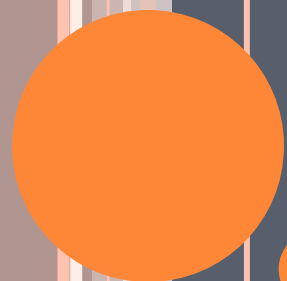
Track	Count
Dark Star	51
Sentinel	46
No Mans Land	44
Turtle Island	40
Misty	38

Albums By Mike Oldfield

Album	Tracks
Discovery 1999	8 Tracks
Incantations 1999	4 Tracks
QE2 1999	9 Tracks
The Killing Fields 1999	17 Tracks
The Orchestral Tubular Bells 1999	2 Tracks
The Songs Of Distant Earth 1999	17 Tracks
Tres Lunas 1999	14 Tracks

Playing: Mike Oldfield - Amarok (60:02)

28 Tracks - [4:29:43] 0:14:40



WINDOWS

Windows

- A friendly operating system but with many trade-offs:
 - Less power
 - Less flexibility
 - Requires license. Free for IIT students ☺
 - Less Security ☹
- Security: Computers get infected by malicious software, virus etc. and try to spread across LAN.
- It is YOUR responsibility to secure your system and also not to harm other users knowingly or unknowingly



Firewall & Antivirus

- Mandatory for Windows system to have a:
 - Properly configured firewall
 - Up-to-date, regularly running Antivirus
 - Up-to-date Anti-Spyware
- Firewall: Only allow those process to access the network whose function you know. DON'T allow any unfamiliar process
 - Sygate, Zone-alarm(free firewalls)
- Antivirus: Run update or manually update (at least twice a week) and run Complete Scan daily
 - Norton, AVG(free edition), McAfee, Avast(freeware), Clam Win(freeware)
 - Anti-Spyware bundled with Antivirus in many products



Possible Offences

- Bombarding – Flooding the network with many request at hostel or institute level, greatly slowing down the network for peers
- Email spam – Any spam launched manually or by virus attack
- Damage to CC equipment
- Malicious Activity
 - Packet Sniffing
 - Hacking
 - Password Snooping (Stealing)
- Read CC and MLC website for details



Important Links

- CC Website: <http://www.cc.iitb.ac.in/>
- Internal IITB WEB Server: <http://web.iitb.ac.in/>
- MLC Website: <http://gymkhana.iitb.ac.in/~mlc/>





Questions???

THANK YOU ☺

Udit Gupta

Sravan Kumar

Chirag Patel